

Обтачка
горловины спинки

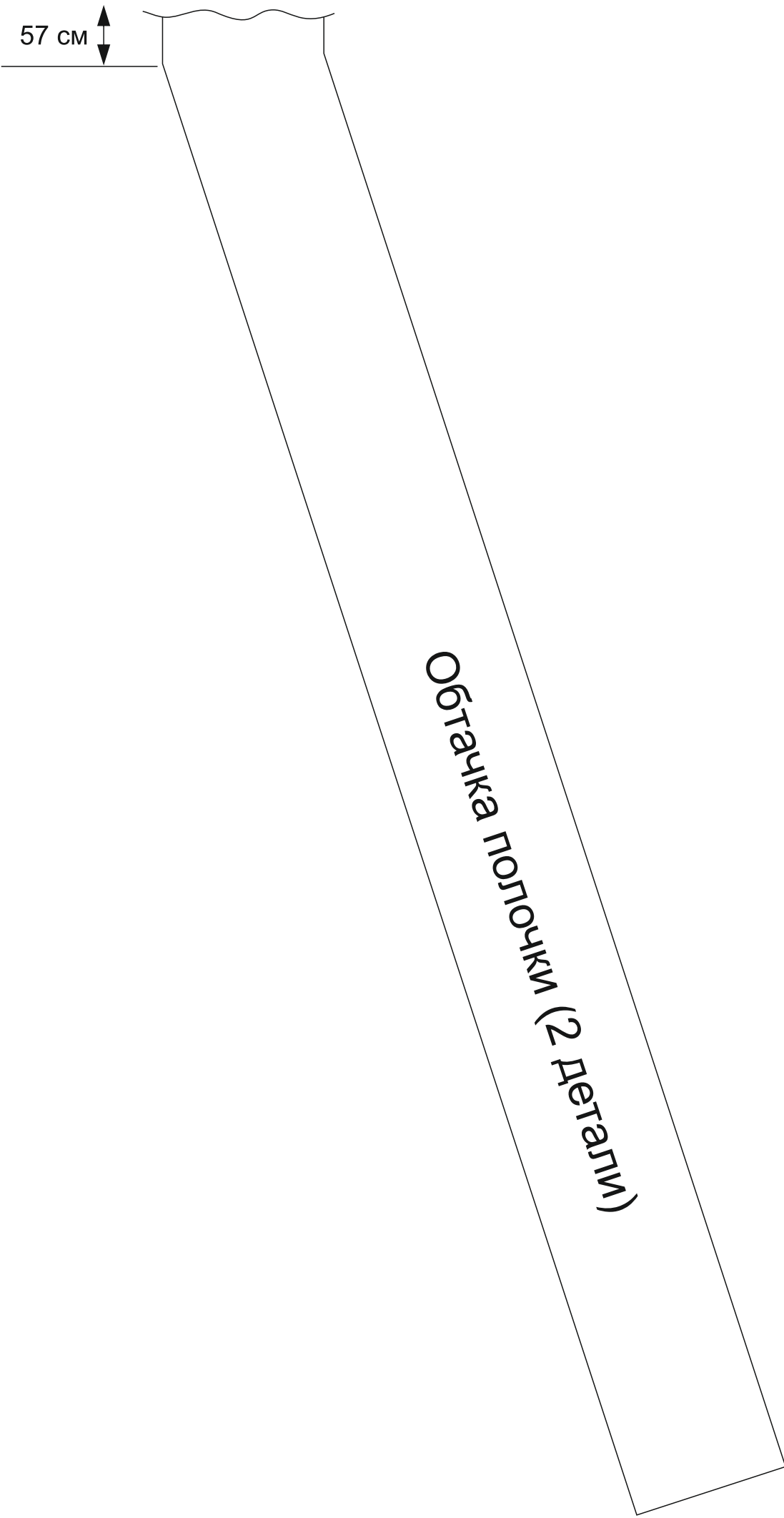
The image shows three curved fabric pattern pieces arranged vertically. The top piece is the smallest and has a dashed line on its right side labeled 'глуб' (depth). The middle piece is larger than the top one. The bottom piece is the largest and has a similar shape to the middle one.

Обтачка проймы.
Спинка (2 детали).

Обтачка проймы.
Перед (2 детали).

57 см

Обтачка полочки (2 детали)





Полочка 1 часть



Полочка 2 часть



Полочка 3 часть

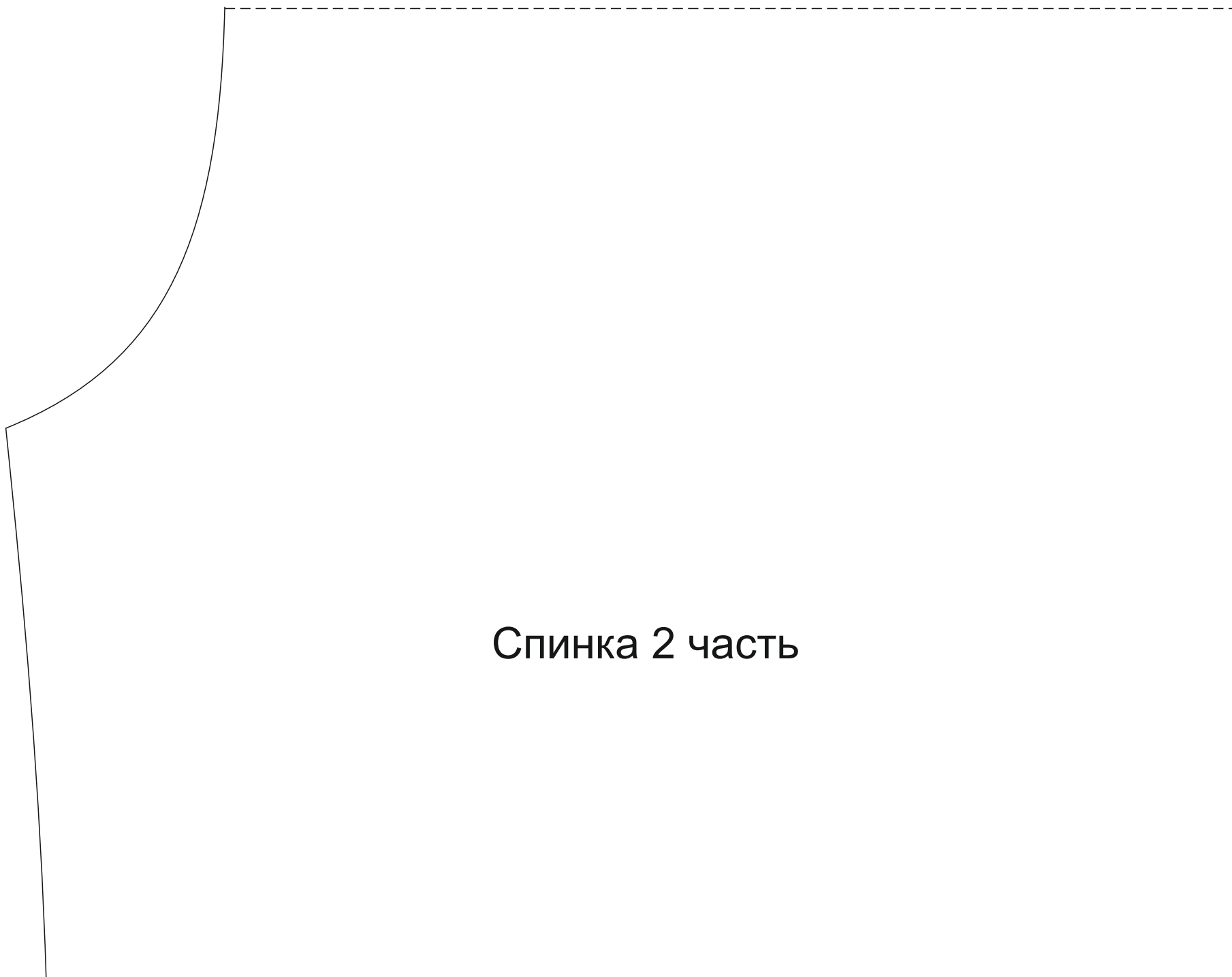
Полочка 4 часть



Полочка 5 часть



Спинка 1 часть



Спинка 2 часть



Спинка 3 часть

The image shows a technical drawing of a chair backrest part, labeled "Спинка 3 часть". The drawing is enclosed in a dashed rectangular border. The left side of the part is defined by a solid line that starts with a vertical segment at the top, followed by a short diagonal segment sloping inward, then a longer diagonal segment sloping outward, and finally a vertical segment at the bottom. The right, top, and bottom edges are represented by dashed lines, indicating they are part of a larger assembly or are hidden from view.

Спинка 4 часть



Спинка 5 часть